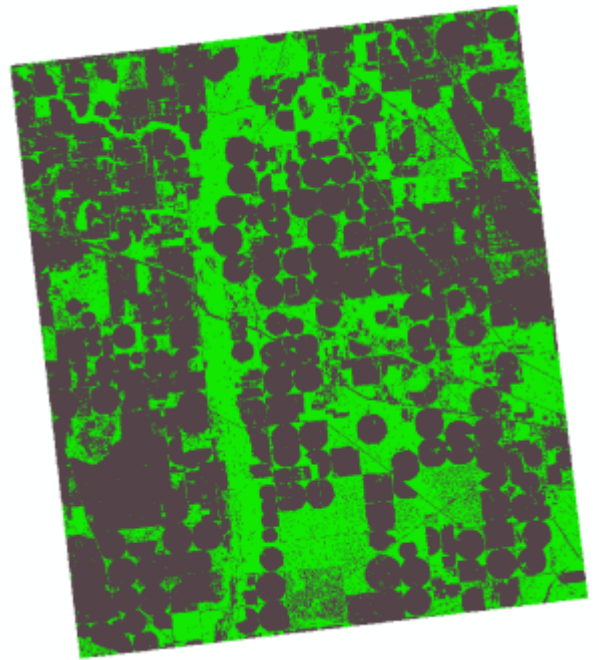


# GFC Canopy assessment

[Workspace](#)



This project is sponsored by the Georgia Forestry Commission (GFC). The project aims to assess statewide tree canopy coverage using the National Agriculture Imagery Program (NAIP) imagery and machine-learning software. It is a follow-up project to the 2015 statewide canopy assessment project conducted by UNG faculty and students in 2016. We will assess 2009 and 2019 statewide tree canopy and determine canopy changes from 2009 to 2019.

## News

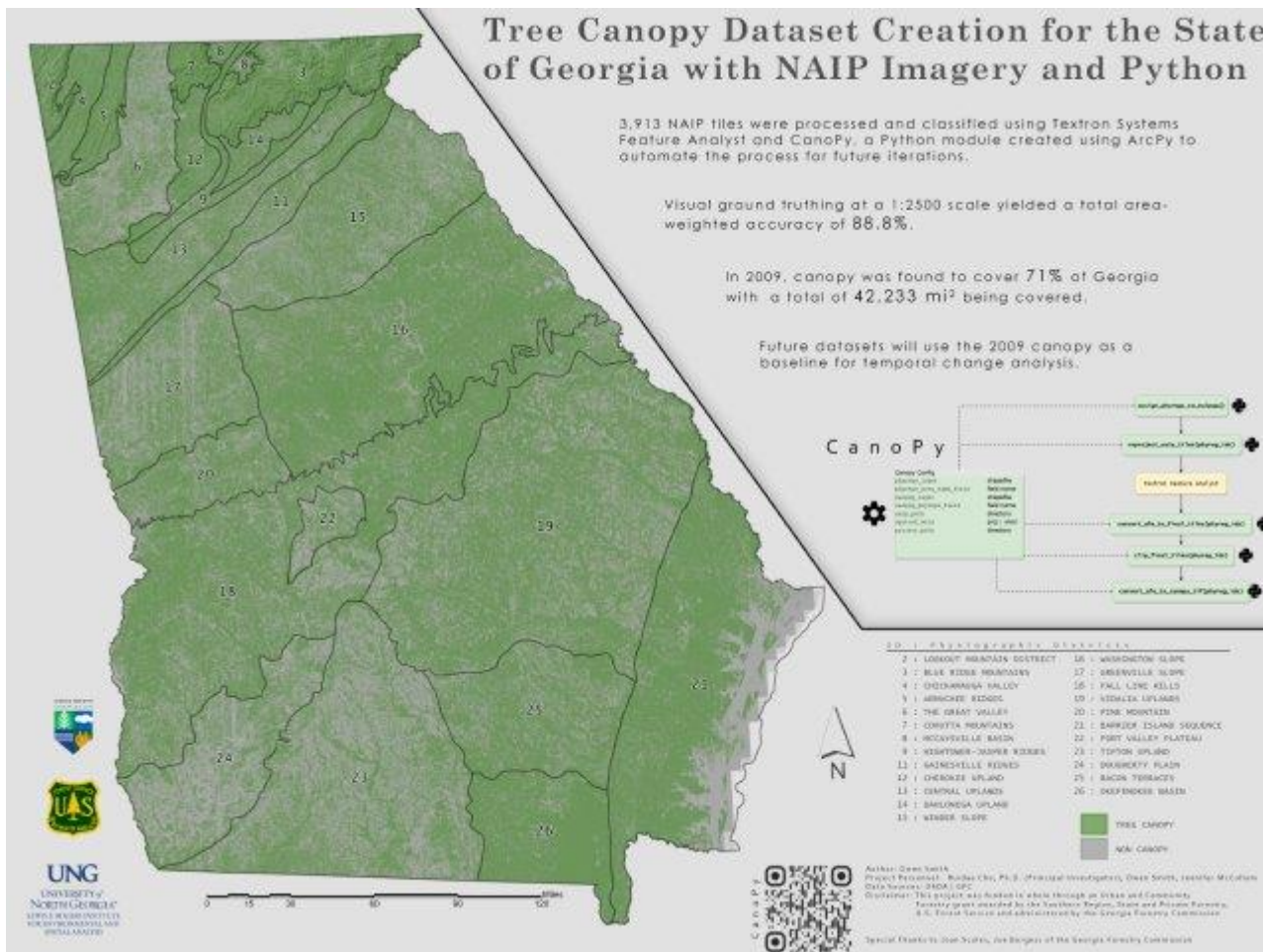
[UNG news: Forestry commission to fund study of state's tree canopy](#)

## Software

[CanoPy](#)

## 2020 Esri User Conference map

[Full size](#) . [Esri map gallery](#)



## Results

- [Physiographic\\_Districts\\_GA.zip](#)

## 2009 analysis

- [Reproducibility of the 2015 Results and a Proposed Method for Future Canopy Analyses.pdf](#)
- [Georgia Statewide Assessment of 2009 Canopy.pdf](#)
- [canopy\\_2009\\_Armuchee\\_Ridges.tif](#)
- [canopy\\_2009\\_Bacon\\_Terraces.tif](#)
- [canopy\\_2009\\_Barrier\\_Island\\_Sequence.tif](#)
- [canopy\\_2009\\_Blue\\_Ridge\\_Mountains.tif](#)
- [canopy\\_2009\\_Central\\_Uplands.tif](#)
- [canopy\\_2009\\_Cherokee\\_Upland.tif](#)
- [canopy\\_2009\\_Chickamauga\\_Valley.tif](#)
- [canopy\\_2009\\_Cohutta\\_Mountains.tif](#)
- [canopy\\_2009\\_Dahlonega\\_Upland.tif](#)
- [canopy\\_2009\\_Dougherty\\_Plain.tif](#)
- [canopy\\_2009\\_Fall\\_Line\\_Hills.tif](#)
- [canopy\\_2009\\_Fort\\_Valley\\_Plateau.tif](#)
- [canopy\\_2009\\_Gainesville\\_Ridges.tif](#)
- [canopy\\_2009\\_Greenville\\_Slope.tif](#)
- [canopy\\_2009\\_Hightower\\_Jasper\\_Ridges.tif](#)

- [canopy\\_2009\\_Lookout\\_Mountain\\_District.tif](#)
- [canopy\\_2009\\_McCaysville\\_Basin.tif](#)
- [canopy\\_2009\\_Okefenokee\\_Basin.tif](#)
- [canopy\\_2009\\_Pine\\_Mountain.tif](#)
- [canopy\\_2009\\_The\\_Great\\_Valley.tif](#)
- [canopy\\_2009\\_Tifton\\_Upland.tif](#)
- [canopy\\_2009\\_Vidalia\\_Uplands.tif](#)
- [canopy\\_2009\\_Washington\\_Slope.tif](#)
- [canopy\\_2009\\_Winder\\_Slope.tif](#)

## 2019 analysis

- [Training New Automated Feature Extraction Models for Canopy Classification Using the 2019 60cm NAIP Imagery.pdf](#)
- [Georgia Statewide Assessment of 2019 Canopy.pdf](#)
- [canopy\\_2019\\_Armuchee\\_Ridges.tif](#)
- [canopy\\_2019\\_Bacon\\_Terraces.tif](#)
- [canopy\\_2019\\_Barrier\\_Island\\_Sequence.tif](#)
- [canopy\\_2019\\_Blue\\_Ridge\\_Mountains.tif](#)
- [canopy\\_2019\\_Central\\_Uplands.tif](#)
- [canopy\\_2019\\_Cherokee\\_Upland.tif](#)
- [canopy\\_2019\\_Chickamauga\\_Valley.tif](#)
- [canopy\\_2019\\_Cohutta\\_Mountains.tif](#)
- [canopy\\_2019\\_Dahlongega\\_Upland.tif](#)
- [canopy\\_2019\\_Dougherty\\_Plain.tif](#)
- [canopy\\_2019\\_Fall\\_Line\\_Hills.tif](#)
- [canopy\\_2019\\_Fort\\_Valley\\_Plateau.tif](#)
- [canopy\\_2019\\_Gainesville\\_Ridges.tif](#)
- [canopy\\_2019\\_Greenville\\_Slope.tif](#)
- [canopy\\_2019\\_Hightower\\_Jasper\\_Ridges.tif](#)
- [canopy\\_2019\\_Lookout\\_Mountain\\_District.tif](#)
- [canopy\\_2019\\_McCaysville\\_Basin.tif](#)
- [canopy\\_2019\\_Okefenokee\\_Basin.tif](#)
- [canopy\\_2019\\_Pine\\_Mountain.tif](#)
- [canopy\\_2019\\_The\\_Great\\_Valley.tif](#)
- [canopy\\_2019\\_Tifton\\_Upland.tif](#)
- [canopy\\_2019\\_Vidalia\\_Uplands.tif](#)
- [canopy\\_2019\\_Washington\\_Slope.tif](#)
- [canopy\\_2019\\_Winder\\_Slope.tif](#)

## 2009-2019 change analysis

- [91 GA counties.pdf](#)
- [Georgia Statewide Assessment of Canopy Change Between 2009 and 2019.pdf](#)

projects

From:

<https://www.hydrowiki.isnew.info/> - **HydroCS Wiki**

Permanent link:

[https://www.hydrowiki.isnew.info/projects/gfc\\_canopy\\_assessment](https://www.hydrowiki.isnew.info/projects/gfc_canopy_assessment)

Last update: **2024-08-03 11:26 pm**

